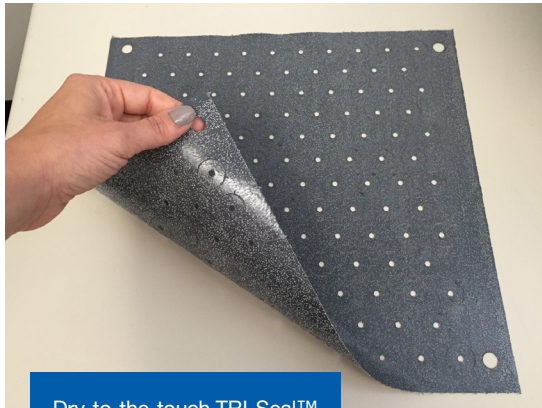


Tacky TRI-Seal™



Dry-to-the-touch TRI-Seal™

## Engineered Innovation.

The information contained herein is, to the best of our knowledge and belief, accurate and reliable as of the date compiled. However, no representation, warranty, or guarantee is made regarding its accuracy, reliability, or completeness by L&L Products, Inc. or any of its affiliates.

It is the responsibility of the user to assure the suitability and completeness of such information and any depicted product for the particular use of the user. L&L Products, Inc. and its affiliates accept no liability for any loss or damage that may occur from the use of this information or any depicted product. L&L Products, Inc. and its affiliates specifically and expressly disclaim any and all warranties, express or implied, including warranties of merchant-ability, fitness for a particular purpose, and freedom from claims of infringement of the rights of others associated with the sale or use of any product depicted.

L&L Products, Inc. and its affiliates further disclaim any liability for consequential or incidental damages of any kind, including lost profits.

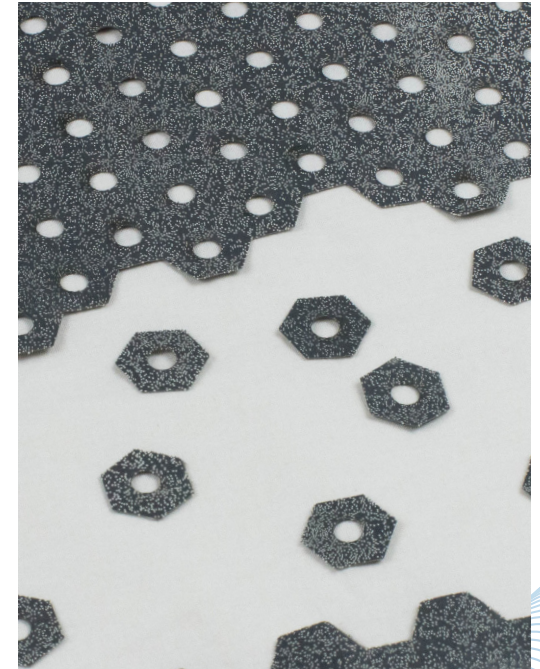
### CONTACT

**Bill Barz**  
Senior PD Engineer  
bill.barz@llproducts.com  
+1 586 531 4253

llproducts.com

## TRI-Seal™.

### Torque Retention Isolation Sealing Solutions



llproducts.com

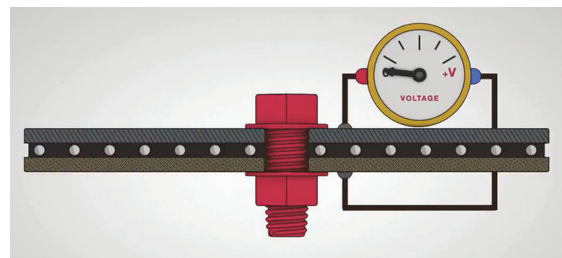


TRI-Seal™ introduces rigid spheres into expandable sealant materials which are used to seal interfaces where load retention and/or separation of dissimilar materials are important.

A unique feature of TRI-Seal™ is that it is capable of addressing torque retention, isolation at dissimilar material interfaces, and sealing against water, air, and dust intrusion all at the same time. Non-conductive Alumina spheres are used in both the dry and tacky products. Torque retention is achieved by the clamp force between substrates being supported by the rigid Alumina spheres.

For the dry to touch seal, the sealing material is thinner than the spheres to ensure the contact with the metal. As for the tacky, a thicker seal can be achieved so that the material can flow under clamp load to ensure maximum sealing coverage.

## TORQUE RETENTION ISOLATION SEALING SOLUTIONS

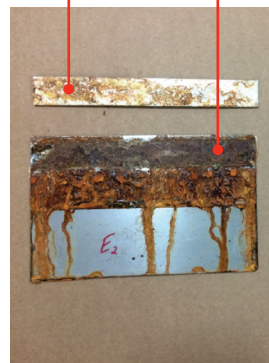


A sufficient gap is maintained to prevent the creation of a galvanic cell.

### KEY PRODUCT ATTRIBUTES

- Sealing from water, dust, and air
- <3% torque fall-off
- No conductivity or galvanic corrosion
- 0.5 mm thick
- Dry to the touch or tacky
- Can be heat-bonded (for dry solution)
- Pressure sensitive (for tacky solution)

WITHOUT TRI-SEAL™  
Significant Corrosion

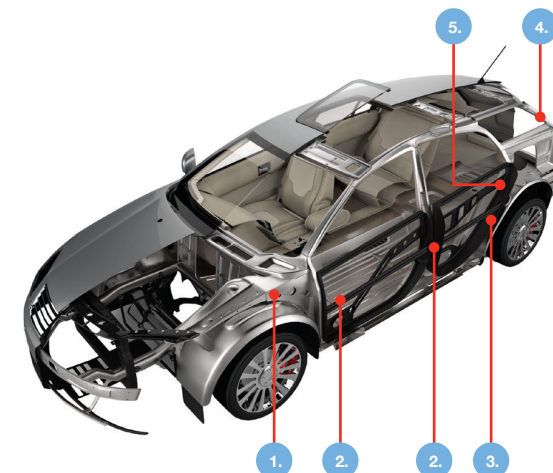


WITH TRI-SEAL™  
No Corrosion



## L&L SEAL

### TYPICAL APPLICATION AREAS



1. Hood Hinges/Latches



2. Door Hinges/Strikers



3. Bolted/Riveted Attachments



4. Lift Gate/Tailgate Hinges



5. Dissimilar Metal Interfaces

