

BEYOND LIMITS

**T LINK<sup>®</sup>**

An advanced engineering thermoplastic resin with excellent adhesive properties for ultimate performance and processability.

# YARN/FILAMENTS

## REINFORCEMENT FOR TEXTILE APPLICATIONS

Our novel T-Link® yarn and filaments are used as a vehicle to introduce a resin into an advanced composite fabric in order to achieve high strength, toughness, and ease of use.

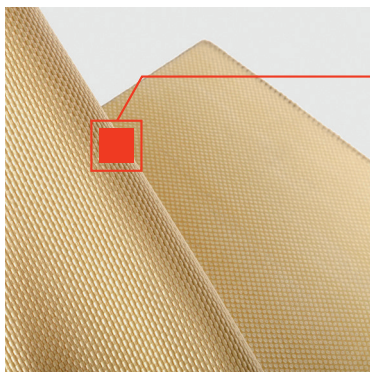
T-Link® yarn and filaments can effectively be co-woven or sewn into textile applications to make a dry thermoplastic composite with targeted and precise control of resin content.

Melt Index (dg/min @ 190°C)

PRODUCT	GRADES	WHAT DOES IT ENABLE
<b>COATED ARAMID YARN</b>	3360 dTex aramid fiber is coated with T-Link® to 5250 dTex*	<ul style="list-style-type: none"><li>– Can be co-woven with reinforcement fibers</li><li>– Creates a drapable fabric with a very consistent and precise resin content that is ready for consolidation</li></ul>

<b>MONOFILAMENT YARN</b>	450, 850 or 2,400 dTex	<ul style="list-style-type: none"><li>– Can be used in weaving, stitching, knitting, and braiding</li></ul>
--------------------------	------------------------	---

\* Developmental Technology



### KEY PRODUCT ATTRIBUTES

- Reduces the time and labor involved in applying a wet resin system and the subsequent curing of the thermoset resin
- Reduces weight
- Ability to control the thickness of the laminate due to the co-woven feature
- Reduces the layup and process time
- No freezer required
- Control of resin content



Scan for disclaimer

[lproducts.com/t-link](https://products.com/t-link)